

STATE	STATE PROJECT REFERENCE NO.	SHEET NO.	TOTAL SHEETS
N.C.	17BP.14.R.126	1	7

STATE OF NORTH CAROLINA
DEPARTMENT OF TRANSPORTATION
DIVISION OF HIGHWAYS
GEOTECHNICAL ENGINEERING UNIT

STRUCTURE
SUBSURFACE INVESTIGATION

PROJ. REFERENCE NO. 17BP.14.R.126 F.A. PROJ. N/A

COUNTY TRANSYLVANIA

PROJECT DESCRIPTION LOW IMPACT BRIDGE REPLACEMENT: DIVISION 14

SITE DESCRIPTION BRIDGE NO. 870162 OVER SILVER CREEK ON SR 1361 (OLD NC 280)

CONTENTS

<u>SHEET</u>	<u>DESCRIPTION</u>
1	TITLE SHEET
2 -2A	LEGEND
3	BORING LOCATION DIAGRAM
3A	BORING PROFILE DIAGRAM
4 - 7	BORE LOGS

PERSONNEL

S. GUTOWSKI

P. MCCLLOUD

D. CORLEY

CONTRACT DRILLER

INVESTIGATED BY TERRACON CONSULTANTS

CHECKED BY D. CORLEY

SUBMITTED BY TERRACON CONSULTANTS

DATE JULY 2014

CAUTION NOTICE

THE SUBSURFACE INFORMATION AND THE SUBSURFACE INVESTIGATION ON WHICH IT IS BASED WERE MADE FOR THE PURPOSE OF PREPARING THE SCOPE OF WORK TO BE INCLUDED IN THE REQUEST FOR PROPOSAL. THE VARIOUS FIELD BORING LOGS, ROCK CORES, AND SOIL TEST DATA AVAILABLE MAY BE REVIEWED OR INSPECTED IN RALEIGH BY CONTACTING THE N.C. DEPARTMENT OF TRANSPORTATION, GEOTECHNICAL ENGINEERING UNIT AT (919) 701-6850. THE SUBSURFACE PLANS AND REPORTS, FIELD BORING LOGS, ROCK CORES, AND SOIL TEST DATA ARE NOT PART OF THE CONTRACT.

SOIL AND ROCK BOUNDARIES WITHIN A BOREHOLE ARE BASED ON GEOTECHNICAL INTERPRETATION UNLESS ENCOUNTERED IN A SAMPLE. INTERPRETED BOUNDARIES MAY NOT NECESSARILY REFLECT ACTUAL SUBSURFACE CONDITIONS BETWEEN SAMPLED STRATA, AND BOREHOLE INFORMATION MAY NOT NECESSARILY REFLECT ACTUAL SUBSURFACE CONDITIONS BETWEEN BORINGS. THE LABORATORY SAMPLE DATA AND THE IN SITU (IN-PLACE) TEST DATA CAN BE RELIED ON ONLY TO THE DEGREE OF RELIABILITY INHERENT IN THE STANDARD TEST METHOD. THE OBSERVED WATER LEVELS OR SOIL MOISTURE CONDITIONS INDICATED IN THE SUBSURFACE INVESTIGATIONS ARE AS RECORDED AT THE TIME OF THE INVESTIGATION. THESE WATER LEVELS OR SOIL MOISTURE CONDITIONS MAY VARY CONSIDERABLY WITH TIME ACCORDING TO CLIMATIC CONDITIONS INCLUDING TEMPERATURES, PRECIPITATION, AND WIND, AS WELL AS OTHER NON-CLIMATIC FACTORS.

THE DEPARTMENT DOES NOT WARRANT OR GUARANTEE THE SUFFICIENCY OR ACCURACY OF THE INVESTIGATION MADE, OR OPINION OF THE DEPARTMENT AS TO THE TYPE OF MATERIALS AND CONDITIONS TO BE ENCOUNTERED. THE BIDDER OR CONTRACTOR IS CAUTIONED TO MAKE SUCH INDEPENDENT SUBSURFACE INVESTIGATIONS AS HE DEEMS NECESSARY TO SATISFY HIMSELF AS TO CONDITIONS TO BE ENCOUNTERED ON THE PROJECT. THE CONTRACTOR SHALL HAVE NO CLAIM FOR ADDITIONAL COMPENSATION OR FOR AN EXTENSION OF TIME FOR ANY REASON RESULTING FROM THE ACTUAL CONDITIONS ENCOUNTERED AT THE SITE DIFFERING FROM THOSE INDICATED IN THE SUBSURFACE INFORMATION.

NOTE - THE INFORMATION CONTAINED HEREIN IS NOT IMPLIED OR GUARANTEED BY THE N.C. DEPARTMENT OF TRANSPORTATION AS BEING ACCURATE NOR IT IS CONSIDERED TO BE PART OF THE PLANS, SPECIFICATIONS, OR CONTRACT FOR THE PROJECT.

NOTE - BY HAVING REQUESTED THIS INFORMATION THE CONTRACTOR SPECIFICALLY WAIVES ANY CLAIMS FOR INCREASED COMPENSATION OR EXTENSION OF TIME BASED ON DIFFERENCES BETWEEN THE CONDITIONS INDICATED HEREIN AND THE ACTUAL CONDITIONS AT THE PROJECT SITE.

DRAWN BY: S. GUTOWSKI

Terracon

2020 STARITA ROAD, SUITE E CHARLOTTE, NC 28206

PH. (704) 509-1777

FAX. (704) 509-1888



NORTH CAROLINA DEPARTMENT OF TRANSPORTATION
DIVISION OF HIGHWAYS
GEOTECHNICAL ENGINEERING UNIT
SOIL AND ROCK LEGEND, TERMS, SYMBOLS, AND ABBREVIATIONS

SOIL DESCRIPTION

SOIL IS CONSIDERED TO BE THE UNCONSOLIDATED, SEMI-CONSOLIDATED, OR WEATHERED EARTH MATERIALS THAT CAN BE PENETRATED WITH A CONTINUOUS FLIGHT POWER AUGER, AND YIELD LESS THAN 100 BLOWS PER FOOT ACCORDING TO STANDARD PENETRATION TEST (AASHTO T206, ASTM D-1586). SOIL CLASSIFICATION IS BASED ON THE AASHTO SYSTEM. BASIC DESCRIPTIONS GENERALLY SHALL INCLUDE: CONSISTENCY, COLOR, TEXTURE, MOISTURE, AASHTO CLASSIFICATION, AND OTHER PERTINENT FACTORS SUCH AS MINERALOGICAL COMPOSITION, ANGULARITY, STRUCTURE, PLASTICITY, ETC. EXAMPLE:
VERY STIFF, GRAY SILTY CLAY, MOIST WITH INTERBEDDED FINE SAND LAYERS, HIGHLY PLASTIC, A-7-6

GRADATION

WELL GRADED - INDICATES A GOOD REPRESENTATION OF PARTICLE SIZES FROM FINE TO COARSE.
UNIFORM - INDICATES THAT SOIL PARTICLES ARE ALL APPROXIMATELY THE SAME SIZE. (ALSO POORLY GRADED)
GAP-GRADED - INDICATES A MIXTURE OF UNIFORM PARTICLES OF TWO OR MORE SIZES.

ANGULARITY OF GRAINS

THE ANGULARITY OR ROUNDNESS OF SOIL GRAINS IS DESIGNATED BY THE TERMS **ANGULAR**, **SUBANGULAR**, **SUBROUNDED**, OR **ROUNDED**.

SOIL LEGEND AND AASHTO CLASSIFICATION

GENERAL CLASS.	GRANULAR MATERIALS (≤ 35% PASSING #200)						SILT-CLAY MATERIALS (> 35% PASSING #200)				ORGANIC MATERIALS		
GROUP CLASS.	A-1		A-3		A-2		A-4	A-5	A-6	A-7	A-1, A-2	A-4, A-5	A-6, A-7
SYMBOL	A-1-a	A-1-b	A-2-4	A-2-5	A-2-6	A-2-7					A-3		
% PASSING	# 10		# 40		# 200								
LIQUID LIMIT	50 MX		30 MX		15 MX		51 MN	35 MX	35 MX	35 MX	35 MX	36 MN	36 MN
PLASTIC INDEX	6 MX		NP		40 MX		41 MN	40 MX	41 MN	41 MN	40 MX	41 MN	11 MN
GROUP INDEX	0		0		0		4 MX	8 MX	12 MX	16 MX	No MX		
USUAL TYPES OF MAJOR MATERIALS	STONE FRAGS. GRAVEL, AND SAND		FINE SAND		SILTY OR CLAYEY GRAVEL AND SAND		SILTY SOILS	CLAYEY SOILS		SOILS WITH LITTLE OR MODERATE AMOUNTS OF ORGANIC MATTER			
GEN. RATING AS A SUBGRADE	EXCELLENT TO GOOD						FAIR TO POOR			FAIR TO POOR	POOR	UNSATURABLE	HIGHLY ORGANIC SOILS

PI OF A-7-5 SUBGROUP IS ≤ LL - 30 ; PI OF A-7-6 SUBGROUP IS > LL - 30

MINERALOGICAL COMPOSITION

MINERAL NAMES SUCH AS QUARTZ, FELDSPAR, MICA, TALC, KAOLIN, ETC. ARE USED IN DESCRIPTIONS WHENEVER THEY ARE CONSIDERED OF SIGNIFICANCE.

COMPRESSIBILITY

SLIGHTLY COMPRESSIBLE LIQUID LIMIT LESS THAN 31
MODERATELY COMPRESSIBLE LIQUID LIMIT EQUAL TO 31-50
HIGHLY COMPRESSIBLE LIQUID LIMIT GREATER THAN 50

PERCENTAGE OF MATERIAL

ORGANIC MATERIAL	GRANULAR SOILS	SILT - CLAY SOILS	OTHER MATERIAL
TRACE OF ORGANIC MATTER	2 - 3%	3 - 5%	TRACE
LITTLE ORGANIC MATTER	3 - 5%	5 - 12%	LITTLE
MODERATELY ORGANIC	5 - 10%	12 - 20%	SOME
HIGHLY ORGANIC	>10%	>20%	HIGHLY

GROUND WATER

WATER LEVEL IN BORE HOLE IMMEDIATELY AFTER DRILLING
 STATIC WATER LEVEL AFTER 24 HOURS
 PERCHED WATER, SATURATED ZONE, OR WATER BEARING STRATA
 SPRING OR SEEP

CONSISTENCY OR DENSENESS

PRIMARY SOIL TYPE	COMPACTNESS OR CONSISTENCY	RANGE OF STANDARD PENETRATION RESISTANCE (N-VALUE)	RANGE OF UNCONFINED COMPRESSIVE STRENGTH (TONS/FT ²)
GENERALLY GRANULAR MATERIAL (NON-COHESIVE)	VERY LOOSE LOOSE MEDIUM DENSE DENSE VERY DENSE	<4 4 TO 10 10 TO 30 30 TO 50 >50	N/A
GENERALLY SILT-CLAY MATERIAL (COHESIVE)	VERY SOFT SOFT MEDIUM STIFF STIFF VERY STIFF HARD	<2 2 TO 4 4 TO 8 8 TO 15 15 TO 30 >30	<0.25 0.25 TO 0.50 0.5 TO 1.0 1 TO 2 2 TO 4 >4

MISCELLANEOUS SYMBOLS

ROADWAY EMBANKMENT (RE) WITH SOIL DESCRIPTION	SPT TEST BORING	TEST BORING W/ CORE
SOIL SYMBOL	AUGER BORING	SPT N-VALUE
ARTIFICIAL FILL (AF) OTHER THAN ROADWAY EMBANKMENT	CORE BORING	SPT REFUSAL
INFERRED SOIL BOUNDARY	MONITORING WELL	
INFERRED ROCK LINE	PIEZOMETER INSTALLATION	
ALLUVIAL SOIL BOUNDARY	SLOPE INDICATOR INSTALLATION	
DIP & DIP DIRECTION OF ROCK STRUCTURES	CONE PENETROMETER TEST	
	SOUNDING ROD	

TEXTURE OR GRAIN SIZE

U.S. STD. SIEVE SIZE OPENING (MM)	4	10	40	60	200	270
	4.76	2.00	0.42	0.25	0.075	0.053

BOULDER (BLDR.)	COBBLE (COB.)	GRAVEL (GR.)	COARSE SAND (CSE. SD.)	FINE SAND (F SD.)	SILT (SL.)	CLAY (CL.)
GRAIN SIZE	MM 305 IN. 12	75 3	2.0	0.25	0.05	0.005

ABBREVIATIONS

AR - AUGER REFUSAL	MOD. - MEDIUM	VST - VANE SHEAR TEST
BT - BORING TERMINATED	MICA - MICACEOUS	WEA. - WEATHERED
CL. - CLAY	MOD. - MODERATELY	γ - UNIT WEIGHT
CPT - CONE PENETRATION TEST	NP - NON PLASTIC	γ _d - DRY UNIT WEIGHT
ORG. - COARSE	ORG. - ORGANIC	
DMT - DILATOMETER TEST	PMT - PRESSUREMETER TEST	SAMPLE ABBREVIATIONS
DPT - DYNAMIC PENETRATION TEST	SAP. - SAPROLITIC	S - BULK
○ - VOID RATIO	SD. - SAND, SANDY	SS - SPLIT SPOON
F - FINE	SL. - SILT, SILTY	ST - SHELBY TUBE
FOSS. - FOSSILIFEROUS	SLI. - SLIGHTLY	RS - ROCK
FRAC. - FRACTURED, FRACTURES	TCR - TRICONE REFUSAL	RT - RECOMPACTED TRIAXIAL
FRAGS. - FRAGMENTS	w - MOISTURE CONTENT	CBR - CALIFORNIA BEARING RATIO
HI. - HIGHLY	V - VERY	

SOIL MOISTURE - CORRELATION OF TERMS

SOIL MOISTURE SCALE (ATTERBERG LIMITS)	FIELD MOISTURE DESCRIPTION	GUIDE FOR FIELD MOISTURE DESCRIPTION
LL PLASTIC RANGE (PI) PL	- SATURATED - (SAT.)	USUALLY LIQUID; VERY WET, USUALLY FROM BELOW THE GROUND WATER TABLE
	- WET - (W)	SEMISOLID; REQUIRES DRYING TO ATTAIN OPTIMUM MOISTURE
OM SL	- MOIST - (M)	SOLID; AT OR NEAR OPTIMUM MOISTURE
	- DRY - (D)	REQUIRES ADDITIONAL WATER TO ATTAIN OPTIMUM MOISTURE

PLASTICITY

NONPLASTIC	PLASTICITY INDEX (PI)	DRY STRENGTH
LOW PLASTICITY	0-5	VERY LOW
MED. PLASTICITY	6-15	SLIGHT
HIGH PLASTICITY	16-25	MEDIUM
	26 OR MORE	HIGH

COLOR

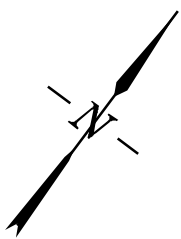
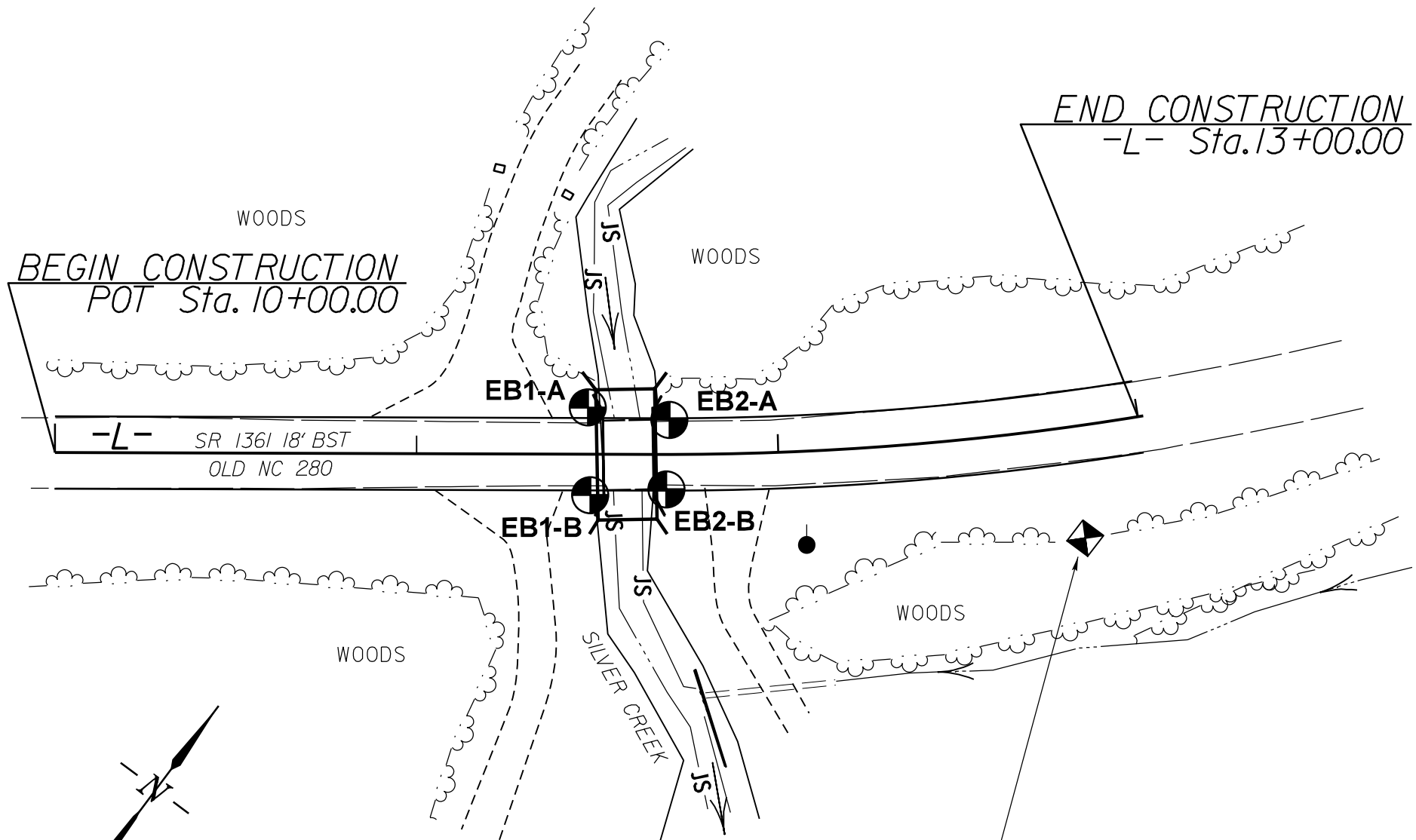
DESCRIPTIONS MAY INCLUDE COLOR OR COLOR COMBINATIONS (TAN, RED, YELLOW-BROWN, BLUE-GRAY). MODIFIERS SUCH AS LIGHT, DARK, STREAKED, ETC. ARE USED TO DESCRIBE APPEARANCE.

EQUIPMENT USED ON SUBJECT PROJECT

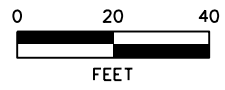
DRILL UNITS:	ADVANCING TOOLS:	HAMMER TYPE:
<input type="checkbox"/> MOBILE B- _____	<input type="checkbox"/> CLAY BITS	<input checked="" type="checkbox"/> AUTOMATIC <input type="checkbox"/> MANUAL
<input type="checkbox"/> BK-51	<input type="checkbox"/> 6" CONTINUOUS FLIGHT AUGER	CORE SIZE:
<input type="checkbox"/> CME-45C	<input checked="" type="checkbox"/> 6" HOLLOW AUGERS	<input type="checkbox"/> -B _____
<input checked="" type="checkbox"/> CME-550	<input type="checkbox"/> HARD FACED FINGER BITS	<input type="checkbox"/> -N _____
<input type="checkbox"/> PORTABLE HOIST	<input type="checkbox"/> TUNG.-CARBIDE INSERTS	<input type="checkbox"/> -H _____
	<input type="checkbox"/> CASING <input type="checkbox"/> W/ ADVANCER	HAND TOOLS:
	<input type="checkbox"/> TRICONE _____ * STEEL TEETH	<input type="checkbox"/> POST HOLE DIGGER
	<input type="checkbox"/> TRICONE _____ * TUNG.-CARB.	<input type="checkbox"/> HAND AUGER
	<input type="checkbox"/> CORE BIT	<input type="checkbox"/> SOUNDING ROD
		<input type="checkbox"/> VANE SHEAR TEST

**NORTH CAROLINA DEPARTMENT OF TRANSPORTATION
DIVISION OF HIGHWAYS
GEOTECHNICAL ENGINEERING UNIT
SOIL AND ROCK LEGEND, TERMS, SYMBOLS, AND ABBREVIATIONS**

ROCK DESCRIPTION		TERMS AND DEFINITIONS	
<p>HARD ROCK IS NON-COASTAL PLAIN MATERIAL THAT IF TESTED, WOULD YIELD SPT REFUSAL. AN INFERRED ROCK LINE INDICATES THE LEVEL AT WHICH NON-COASTAL PLAIN MATERIAL WOULD YIELD SPT REFUSAL. SPT REFUSAL IS PENETRATION BY A SPLIT SPOON SAMPLER EQUAL TO OR LESS THAN 0.1 FOOT PER 60 BLOWS. IN NON-COASTAL PLAIN MATERIAL, THE TRANSITION BETWEEN SOIL AND ROCK IS OFTEN REPRESENTED BY A ZONE OF WEATHERED ROCK. ROCK MATERIALS ARE TYPICALLY DIVIDED AS FOLLOWS:</p>		<p>ALLUVIUM (ALLUV.) - SOILS THAT HAVE BEEN TRANSPORTED BY WATER. AQUIFER - A WATER BEARING FORMATION OR STRATA. ARENACEOUS - APPLIED TO ROCKS THAT HAVE BEEN DERIVED FROM SAND OR THAT CONTAIN SAND. ARGILLACEOUS - APPLIED TO ALL ROCKS OR SUBSTANCES COMPOSED OF CLAY MINERALS, OR HAVING A NOTABLE PROPORTION OF CLAY IN THEIR COMPOSITION, AS SHALE, SLATE, ETC. ARTESIAN - GROUND WATER THAT IS UNDER SUFFICIENT PRESSURE TO RISE ABOVE THE LEVEL AT WHICH IT IS ENCOUNTERED, BUT WHICH DOES NOT NECESSARILY RISE TO OR ABOVE THE GROUND SURFACE. CALCAREOUS (CALC.) - SOILS THAT CONTAIN APPRECIABLE AMOUNTS OF CALCIUM CARBONATE. COLLUVIUM - ROCK FRAGMENTS MIXED WITH SOIL DEPOSITED BY GRAVITY ON SLOPE OR AT BOTTOM OF SLOPE. CORE RECOVERY (REC.) - TOTAL LENGTH OF ALL MATERIAL RECOVERED IN THE CORE BARREL DIVIDED BY TOTAL LENGTH OF CORE RUN AND EXPRESSED AS A PERCENTAGE. DIKE - A TABULAR BODY OF IGNEOUS ROCK THAT CUTS ACROSS THE STRUCTURE OF ADJACENT ROCKS OR CUTS MASSIVE ROCK. DIP - THE ANGLE AT WHICH A STRATUM OR ANY PLANAR FEATURE IS INCLINED FROM THE HORIZONTAL. DIP DIRECTION (DIP AZIMUTH) - THE DIRECTION OR BEARING OF THE HORIZONTAL TRACE OF THE LINE OF DIP, MEASURED CLOCKWISE FROM NORTH. FAULT - A FRACTURE OR FRACTURE ZONE ALONG WHICH THERE HAS BEEN DISPLACEMENT OF THE SIDES RELATIVE TO ONE ANOTHER PARALLEL TO THE FRACTURE. FISSILE - A PROPERTY OF SPLITTING ALONG CLOSELY SPACED PARALLEL PLANES. FLOAT - ROCK FRAGMENTS ON SURFACE NEAR THEIR ORIGINAL POSITION AND DISLODGED FROM PARENT MATERIAL. FLOOD PLAIN (FP) - LAND BORDERING A STREAM, BUILT OF SEDIMENTS DEPOSITED BY THE STREAM. FORMATION (FM.) - A MAPPABLE GEOLOGIC UNIT THAT CAN BE RECOGNIZED AND TRACED IN THE FIELD. JOINT - FRACTURE IN ROCK ALONG WHICH NO APPRECIABLE MOVEMENT HAS OCCURRED. LEDGE - A SHELF-LIKE RIDGE OR PROJECTION OF ROCK WHOSE THICKNESS IS SMALL COMPARED TO ITS LATERAL EXTENT. LENS - A BODY OF SOIL OR ROCK THAT THINS OUT IN ONE OR MORE DIRECTIONS. MOTTLED (MOT.) - IRREGULARLY MARKED WITH SPOTS OF DIFFERENT COLORS. MOTTLING IN SOILS USUALLY INDICATES POOR AERATION AND LACK OF GOOD DRAINAGE. PERCHED WATER - WATER MAINTAINED ABOVE THE NORMAL GROUND WATER LEVEL BY THE PRESENCE OF AN INTERVENING IMPERVIOUS STRATUM. RESIDUAL (RES.) SOIL - SOIL FORMED IN PLACE BY THE WEATHERING OF ROCK. ROCK QUALITY DESIGNATION (ROQ) - A MEASURE OF ROCK QUALITY DESCRIBED BY TOTAL LENGTH OF ROCK SEGMENTS EQUAL TO OR GREATER THAN 4 INCHES DIVIDED BY THE TOTAL LENGTH OF CORE RUN AND EXPRESSED AS A PERCENTAGE. SAPROLITE (SAP.) - RESIDUAL SOIL THAT RETAINS THE RELIC STRUCTURE OR FABRIC OF THE PARENT ROCK. SILL - AN INTRUSIVE BODY OF IGNEOUS ROCK OF APPROXIMATELY UNIFORM THICKNESS AND RELATIVELY THIN COMPARED WITH ITS LATERAL EXTENT, THAT HAS BEEN EMPLACED PARALLEL TO THE BEDDING OR SCHISTOSITY OF THE INTRUDED ROCKS. SLICKENSIDE - POLISHED AND STRIATED SURFACE THAT RESULTS FROM FRICTION ALONG A FAULT OR SLIP PLANE. STANDARD PENETRATION TEST (PENETRATION RESISTANCE) (SPT) - NUMBER OF BLOWS (N OR BPF) OF A 140 LB. HAMMER FALLING 30 INCHES REQUIRED TO PRODUCE A PENETRATION OF 1 FOOT INTO SOIL WITH A 2 INCH OUTSIDE DIAMETER SPLIT SPOON SAMPLER. SPT REFUSAL IS PENETRATION EQUAL TO OR LESS THAN 0.1 FOOT PER 60 BLOWS. STRATA CORE RECOVERY (SREC) - TOTAL LENGTH OF STRATA MATERIAL RECOVERED DIVIDED BY TOTAL LENGTH OF STRATUM AND EXPRESSED AS A PERCENTAGE. STRATA ROCK QUALITY DESIGNATION (SROQ) - A MEASURE OF ROCK QUALITY DESCRIBED BY TOTAL LENGTH OF ROCK SEGMENTS WITHIN A STRATUM EQUAL TO OR GREATER THAN 4 INCHES DIVIDED BY THE TOTAL LENGTH OF STRATA AND EXPRESSED AS A PERCENTAGE. TOPSOIL (TS.) - SURFACE SOILS USUALLY CONTAINING ORGANIC MATTER.</p>	
<p>WEATHERED ROCK (WR)</p> 	<p>NON-COASTAL PLAIN MATERIAL THAT WOULD YIELD SPT N VALUES > 100 BLOWS PER FOOT IF TESTED.</p>		
<p>CRYSTALLINE ROCK (CR)</p> 	<p>FINE TO COARSE GRAIN IGNEOUS AND METAMORPHIC ROCK THAT WOULD YIELD SPT REFUSAL IF TESTED. ROCK TYPE INCLUDES GRANITE, GNEISS, GABBRO, SCHIST, ETC.</p>		
<p>NON-CRYSTALLINE ROCK (NCR)</p> 	<p>FINE TO COARSE GRAIN METAMORPHIC AND NON-COASTAL PLAIN SEDIMENTARY ROCK THAT WOULD YIELD SPT REFUSAL IF TESTED. ROCK TYPE INCLUDES PHYLLITE, SLATE, SANDSTONE, ETC.</p>		
<p>COASTAL PLAIN SEDIMENTARY ROCK (CP)</p> 	<p>COASTAL PLAIN SEDIMENTS CEMENTED INTO ROCK, BUT MAY NOT YIELD SPT REFUSAL. ROCK TYPE INCLUDES LIMESTONE, SANDSTONE, CEMENTED SHELL BEDS, ETC.</p>		
WEATHERING			
<p>FRESH</p>	<p>ROCK FRESH. CRYSTALS BRIGHT, FEW JOINTS MAY SHOW SLIGHT STAINING. ROCK RINGS UNDER HAMMER IF CRYSTALLINE.</p>		
<p>VERY SLIGHT (V SL.)</p>	<p>ROCK GENERALLY FRESH. JOINTS STAINED, SOME JOINTS MAY SHOW THIN CLAY COATINGS IF OPEN. CRYSTALS ON A BROKEN SPECIMEN FACE SHINE BRIGHTLY. ROCK RINGS UNDER HAMMER BLOWS IF OF A CRYSTALLINE NATURE.</p>		
<p>SLIGHT (SL.)</p>	<p>ROCK GENERALLY FRESH, JOINTS STAINED AND DISCOLORATION EXTENDS INTO ROCK UP TO 1 INCH. OPEN JOINTS MAY CONTAIN CLAY. IN GRANITOID ROCKS SOME OCCASIONAL FELDSPAR CRYSTALS ARE DULL AND DISCOLORED. CRYSTALLINE ROCKS RING UNDER HAMMER BLOWS.</p>		
<p>MODERATE (MOD.)</p>	<p>SIGNIFICANT PORTIONS OF ROCK SHOW DISCOLORATION AND WEATHERING EFFECTS. IN GRANITOID ROCKS, MOST FELDSPARS ARE DULL AND DISCOLORED, SOME SHOW CLAY. ROCK HAS DULL SOUND UNDER HAMMER BLOWS AND SHOWS SIGNIFICANT LOSS OF STRENGTH AS COMPARED WITH FRESH ROCK.</p>		
<p>MODERATELY SEVERE (MOD. SEV.)</p>	<p>ALL ROCK EXCEPT QUARTZ DISCOLORED OR STAINED. IN GRANITOID ROCKS, ALL FELDSPARS DULL AND DISCOLORED AND A MAJORITY SHOW KAOLINIZATION. ROCK SHOWS SEVERE LOSS OF STRENGTH AND CAN BE EXCAVATED WITH A GEOLOGIST'S PICK. ROCK GIVES "CLUNK" SOUND WHEN STRUCK. <i>IF TESTED, WOULD YIELD SPT REFUSAL</i></p>		
<p>SEVERE (SEV.)</p>	<p>ALL ROCK EXCEPT QUARTZ DISCOLORED OR STAINED. ROCK FABRIC CLEAR AND EVIDENT BUT REDUCED IN STRENGTH TO STRONG SOIL. IN GRANITOID ROCKS ALL FELDSPARS ARE KAOLINIZED TO SOME EXTENT. SOME FRAGMENTS OF STRONG ROCK USUALLY REMAIN. <i>IF TESTED, YIELDS SPT N VALUES > 100 BPF</i></p>		
<p>VERY SEVERE (V SEV.)</p>	<p>ALL ROCK EXCEPT QUARTZ DISCOLORED OR STAINED. ROCK FABRIC ELEMENTS ARE DISCERNIBLE BUT THE MASS IS EFFECTIVELY REDUCED TO SOIL STATUS, WITH ONLY FRAGMENTS OF STRONG ROCK REMAINING. SAPROLITE IS AN EXAMPLE OF ROCK WEATHERED TO A DEGREE SUCH THAT ONLY MINOR VESTIGES OF THE ORIGINAL ROCK FABRIC REMAIN. <i>IF TESTED, YIELDS SPT N VALUES < 100 BPF</i></p>		
<p>COMPLETE</p>	<p>ROCK REDUCED TO SOIL. ROCK FABRIC NOT DISCERNIBLE, OR DISCERNIBLE ONLY IN SMALL AND SCATTERED CONCENTRATIONS. QUARTZ MAY BE PRESENT AS DIKES OR STRINGERS. SAPROLITE IS ALSO AN EXAMPLE.</p>		
ROCK HARDNESS			
<p>VERY HARD</p>	<p>CANNOT BE SCRATCHED BY KNIFE OR SHARP PICK. BREAKING OF HAND SPECIMENS REQUIRES SEVERAL HARD BLOWS OF THE GEOLOGIST'S PICK.</p>		
<p>HARD</p>	<p>CAN BE SCRATCHED BY KNIFE OR PICK ONLY WITH DIFFICULTY. HARD HAMMER BLOWS REQUIRED TO DETACH HAND SPECIMEN.</p>		
<p>MODERATELY HARD</p>	<p>CAN BE SCRATCHED BY KNIFE OR PICK. GOUGES OR GROOVES TO 0.25 INCHES DEEP CAN BE EXCAVATED BY HARD BLOW OF A GEOLOGIST'S PICK. HAND SPECIMENS CAN BE DETACHED BY MODERATE BLOWS.</p>		
<p>MEDIUM HARD</p>	<p>CAN BE GROOVED OR GOUGED 0.05 INCHES DEEP BY FIRM PRESSURE OF KNIFE OR PICK POINT. CAN BE EXCAVATED IN SMALL CHIPS TO PIECES 1 INCH MAXIMUM SIZE BY HARD BLOWS OF THE POINT OF A GEOLOGIST'S PICK.</p>		
<p>SOFT</p>	<p>CAN BE GROOVED OR GOUGED READILY BY KNIFE OR PICK. CAN BE EXCAVATED IN FRAGMENTS FROM CHIPS TO SEVERAL INCHES IN SIZE BY MODERATE BLOWS OF A PICK POINT. SMALL, THIN PIECES CAN BE BROKEN BY FINGER PRESSURE.</p>		
<p>VERY SOFT</p>	<p>CAN BE CARVED WITH KNIFE. CAN BE EXCAVATED READILY WITH POINT OF PICK. PIECES 1 INCH OR MORE IN THICKNESS CAN BE BROKEN BY FINGER PRESSURE. CAN BE SCRATCHED READILY BY FINGERNAIL.</p>		
FRACTURE SPACING		BEDDING	
<p>TERM</p>	<p>SPACING</p>	<p>TERM</p>	<p>THICKNESS</p>
<p>VERY WIDE</p>	<p>MORE THAN 10 FEET</p>	<p>VERY THICKLY BEDDED</p>	<p>> 4 FEET</p>
<p>WIDE</p>	<p>3 TO 10 FEET</p>	<p>THICKLY BEDDED</p>	<p>1.5 - 4 FEET</p>
<p>MODERATELY CLOSE</p>	<p>1 TO 3 FEET</p>	<p>THINLY BEDDED</p>	<p>0.16 - 1.5 FEET</p>
<p>CLOSE</p>	<p>0.16 TO 1 FEET</p>	<p>VERY THINLY BEDDED</p>	<p>0.03 - 0.16 FEET</p>
<p>VERY CLOSE</p>	<p>LESS THAN 0.16 FEET</p>	<p>THICKLY LAMINATED</p>	<p>0.008 - 0.03 FEET</p>
		<p>THINLY LAMINATED</p>	<p>< 0.008 FEET</p>
INDURATION			
<p>FOR SEDIMENTARY ROCKS, INDURATION IS THE HARDENING OF THE MATERIAL BY CEMENTING, HEAT, PRESSURE, ETC.</p>			
<p>FRIABLE</p>	<p>RUBBING WITH FINGER FREES NUMEROUS GRAINS; GENTLE BLOW BY HAMMER DISINTEGRATES SAMPLE.</p>		
<p>MODERATELY INDURATED</p>	<p>GRAINS CAN BE SEPARATED FROM SAMPLE WITH STEEL PROBE; BREAKS EASILY WHEN HIT WITH HAMMER.</p>		
<p>INDURATED</p>	<p>GRAINS ARE DIFFICULT TO SEPARATE WITH STEEL PROBE; DIFFICULT TO BREAK WITH HAMMER.</p>		
<p>EXTREMELY INDURATED</p>	<p>SHARP HAMMER BLOWS REQUIRED TO BREAK SAMPLE; SAMPLE BREAKS ACROSS GRAINS.</p>		
<p>BENCH MARK: BMI (N: 581476.75, E: 900027.62)</p>		<p>ELEVATION: 2224.77 FT.</p>	
<p>NOTES: FIAD - FILLED IN AFTER DRILLING</p>			



BM #2 ELEV=2224.77'
 -BL- STA. 9+33.47 33.85' RT
 R/R SPIKE IN BASE OF 16" POPLAR



SCALE: 1 : 40
DATE: JULY 2014
DRAWN BY: SWG
APPROVED BY: DJC

PROJ. REFERENCE NUMBER: 17BP.14.R.126
BRIDGE NUMBER: 870162
COUNTY: TRANSYLVANIA
TERRACON PROJECT: 71145027

Terracon

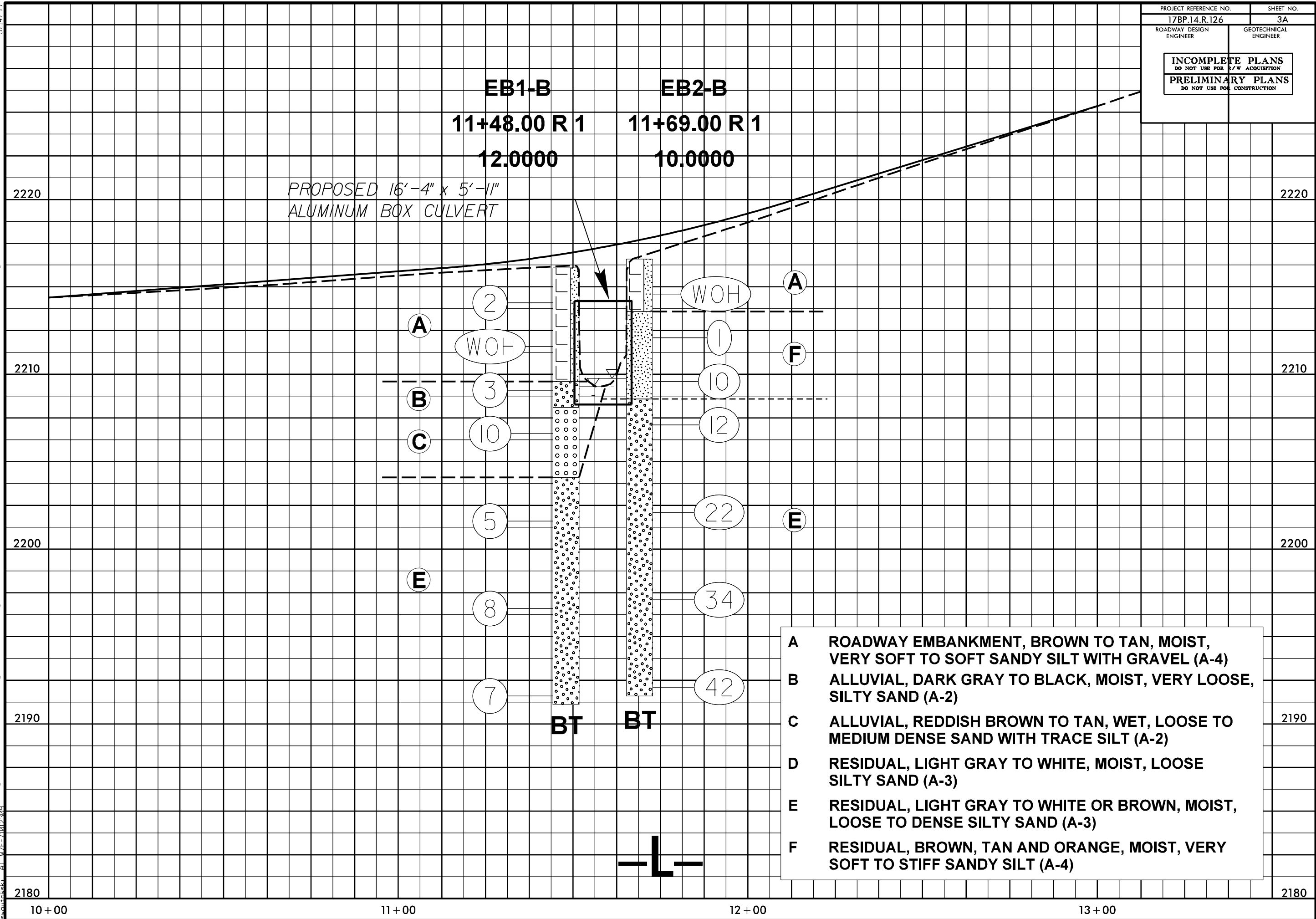
2020 STARITA ROAD, SUITE E CHARLOTTE, NC 28206
 PH. (704) 509-1777 FAX. (704) 509-1888

BORING LOCATION DIAGRAM

BRIDGE NO. 870162 OVER SILVER CREEK
ON SR 1361 (OLD NC 280)

SHEET
3

5/14/99
 20-JUL-2014 11:53
 K:\P\17BP.14.R.126 - Bridge 870162 - Transylvania\CADD_Geotech\Plan\Prof of \PROFILE1.dgn
 K:\P\17BP.14.R.126 - Bridge 870162 - Transylvania\17BP.14.R.126.GEO.BROG870162_TRANSYLVANIA\CADD_Geotech\Plan\Prof of \PROFILE1.dgn
 20-JUL-2014 11:53
 K:\P\17BP.14.R.126 - Bridge 870162 - Transylvania\17BP.14.R.126.GEO.BROG870162_TRANSYLVANIA\CADD_Geotech\Plan\Prof of \PROFILE1.dgn



- A** ROADWAY EMBANKMENT, BROWN TO TAN, MOIST, VERY SOFT TO SOFT SANDY SILT WITH GRAVEL (A-4)
- B** ALLUVIAL, DARK GRAY TO BLACK, MOIST, VERY LOOSE, SILTY SAND (A-2)
- C** ALLUVIAL, REDDISH BROWN TO TAN, WET, LOOSE TO MEDIUM DENSE SAND WITH TRACE SILT (A-2)
- D** RESIDUAL, LIGHT GRAY TO WHITE, MOIST, LOOSE SILTY SAND (A-3)
- E** RESIDUAL, LIGHT GRAY TO WHITE OR BROWN, MOIST, LOOSE TO DENSE SILTY SAND (A-3)
- F** RESIDUAL, BROWN, TAN AND ORANGE, MOIST, VERY SOFT TO STIFF SANDY SILT (A-4)



NCDOT GEOTECHNICAL ENGINEERING UNIT

BORELOG REPORT

PROJECT NO. 17BP.14.R.126	ID. N/A	COUNTY TRANSYLVANIA	GEOLOGIST Gutowski, S.
SITE DESCRIPTION BRIDGE NO. 870162 OVER SILVER CREEK ON SR 1361 (OLD NC 280)			GROUND WTR (ft)
BORING NO. EB1-A	STATION 11+47	OFFSET 13 ft LT	ALIGNMENT -L-
COLLAR ELEV. 2,216.2 ft	TOTAL DEPTH 25.0 ft	NORTHING 581,423	EASTING 899,896
DRILL RIG/HAMMER EFF./DATE HPC2743 CME 550-X 93% 07/12/2011		DRILL METHOD H.S. Augers	HAMMER TYPE Automatic
DRILLER Cain, J.	START DATE 07/15/14	COMP. DATE 07/15/14	SURFACE WATER DEPTH N/A

ELEV (ft)	DRIVE ELEV (ft)	DEPTH (ft)	BLOW COUNT			BLOWS PER FOOT					SAMP. NO.	MOI	LOG	SOIL AND ROCK DESCRIPTION			
			0.5ft	0.5ft	0.5ft	0	25	50	75	100				ELEV. (ft)	DEPTH (ft)		
2220																	
															2,216.2	GROUND SURFACE	0.0
																ROADWAY EMBANKMENT	
2215	2,215.2	1.0	1	1	2							SS-1	M		Soft, brown to tan sandy SILT with gravel (A-4)		
	2,212.7	3.5	1	1	1							SS-2	M				
2210	2,210.2	6.0	WOH	4	4							SS-3	M		ALLUVIAL	5.5	
															Very loose, dark gray SAND with little silt (A-2)	6.5	
															Very loose to loose, reddish brown, gray, and tan fine to coarse SAND (A-3)		
	2,207.7	8.5	1	1	2							SS-4	M			9.5	
															RESIDUAL		
2205															Loose, light gray to white silty SAND (A-2)		
	2,202.7	13.5	2	2	3							SS-5	M				
2200																	
	2,197.7	18.5	2	2	3							SS-6	M				
2195																	
	2,192.7	23.5	3	2	4							SS-7	M				
2190																Boring Terminated at Elevation 2,191.2 ft in Residual Soil	25.0
2185																	
2180																	

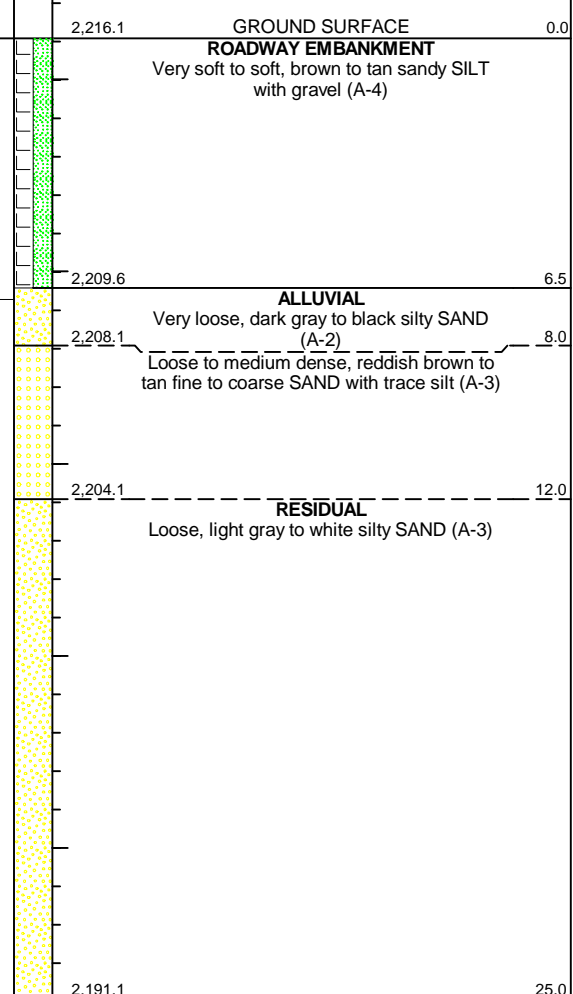
NCDOT BORE SINGLE BORING LOGS - TRANSYLVANIA 870162.GPJ NC_DOT.GDT 7/28/14



NCDOT GEOTECHNICAL ENGINEERING UNIT BORELOG REPORT

PROJECT NO. 17BP.14.R.126		ID. N/A		COUNTY TRANSYLVANIA		GEOLOGIST Gutowski, S.										
SITE DESCRIPTION BRIDGE NO. 870162 OVER SILVER CREEK ON SR 1361 (OLD NC 280)							GROUND WTR (ft)									
BORING NO. EB1-B		STATION 11+48		OFFSET 12 ft RT		ALIGNMENT -L-	0 HR. 6.8									
COLLAR ELEV. 2,216.1 ft		TOTAL DEPTH 25.0 ft		NORTHING 581,404		EASTING 899,911	24 HR. FIAD									
DRILL RIG/HAMMER EFF./DATE HPC2743 CME 550-X 93% 07/12/2011				DRILL METHOD H.S. Augers		HAMMER TYPE Automatic										
DRILLER Cain, J.		START DATE 07/15/14		COMP. DATE 07/15/14		SURFACE WATER DEPTH N/A										
ELEV (ft)	DRIVE ELEV (ft)	DEPTH (ft)	BLOW COUNT			BLOWS PER FOOT					SAMP. NO.	MOI	LOG	SOIL AND ROCK DESCRIPTION		
			0.5ft	0.5ft	0.5ft	0	25	50	75	100				ELEV. (ft)	DEPTH (ft)	
2220																
2215	2,215.1	1.0	WOH	WOH	2										2,216.1	GROUND SURFACE
	2,212.6	3.5	WOH	WOH	WOH											
2210	2,210.1	6.0	WOH		2											
	2,207.6	8.5		3	5										2,209.6	6.5
2205																
	2,202.6	13.5		2	2											
2200																
	2,197.6	18.5		2	4											
2195																
	2,192.6	23.5		3	3											
2190																
2185																
2180																

NCDOT BORE SINGLE BORING LOGS - TRANSYLVANIA 870162.GPJ NC_DOT.GDT 7/28/14





NCDOT GEOTECHNICAL ENGINEERING UNIT BORELOG REPORT

PROJECT NO. 17BP.14.R.126	ID. N/A	COUNTY TRANSYLVANIA	GEOLOGIST Gutowski, S.
SITE DESCRIPTION BRIDGE NO. 870162 OVER SILVER CREEK ON SR 1361 (OLD NC 280)			GROUND WTR (ft)
BORING NO. EB2-A	STATION 11+70	OFFSET 10 ft LT	ALIGNMENT -L-
COLLAR ELEV. 2,216.7 ft	TOTAL DEPTH 25.0 ft	NORTHING 581,434	EASTING 899,916
DRILL RIG/HAMMER EFF./DATE HPC2743 CME 550-X 93% 07/12/2011		DRILL METHOD H.S. Augers	HAMMER TYPE Automatic
DRILLER Cain, J.	START DATE 07/15/14	COMP. DATE 07/15/14	SURFACE WATER DEPTH N/A

ELEV (ft)	DRIVE ELEV (ft)	DEPTH (ft)	BLOW COUNT			BLOWS PER FOOT					SAMP. NO.	MOI	LOG	SOIL AND ROCK DESCRIPTION			
			0.5ft	0.5ft	0.5ft	0	25	50	75	100				ELEV. (ft)	DEPTH (ft)		
2220															2,216.7	GROUND SURFACE	0.0
2215	2,215.7	1.0	WOH	WOH	WOH						SS-1	M			2,213.7	ROADWAY EMBANKMENT Very soft, brown to tan sandy SILT with gravel (A-4)	3.0
2210	2,213.2	3.5	WOH	1	1						SS-2	M				RESIDUAL Very loose, tan, orange, light gray and white sandy SILT (A-4)	
2210	2,210.7	6.0		3	1	2					SS-3	M					
2205	2,208.2	8.5		2	2	2					SS-4	M			2,208.7	Loose, light gray to white silty SAND (A-2)	8.0
2200																	
2195	2,203.2	13.5		2	3	3					SS-5	M					
2190	2,198.2	18.5		2	2	4					SS-6	M					
2185	2,193.2	23.5		3	3	4					SS-7	M			2,191.7	Boring Terminated at Elevation 2,191.7 ft in Residual Soil	25.0
2180																	

NCDOT BORE SINGLE BORING LOGS - TRANSYLVANIA 870162.GPJ NC_DOT.GDT 7/28/14



NCDOT GEOTECHNICAL ENGINEERING UNIT BORELOG REPORT

PROJECT NO. 17BP.14.R.126	ID. N/A	COUNTY TRANSYLVANIA	GEOLOGIST Gutowski, S.
SITE DESCRIPTION BRIDGE NO. 870162 OVER SILVER CREEK ON SR 1361 (OLD NC 280)			GROUND WTR (ft)
BORING NO. EB2-B	STATION 11+69	OFFSET 10 ft RT	ALIGNMENT -L-
COLLAR ELEV. 2,216.6 ft	TOTAL DEPTH 25.0 ft	NORTHING 581,418	EASTING 899,927
DRILL RIG/HAMMER EFF./DATE HPC2743 CME 550-X 93% 07/12/2011		DRILL METHOD H.S. Augers	HAMMER TYPE Automatic
DRILLER Cain, J.	START DATE 07/15/14	COMP. DATE 07/15/14	SURFACE WATER DEPTH N/A

ELEV (ft)	DRIVE ELEV (ft)	DEPTH (ft)	BLOW COUNT			BLOWS PER FOOT					SAMP. NO.	MOI	LOG	SOIL AND ROCK DESCRIPTION		
			0.5ft	0.5ft	0.5ft	0	25	50	75	100				ELEV. (ft)	DEPTH (ft)	
2220																
															2,216.6	0.0
															ROADWAY EMBANKMENT	
	2,215.6	1.0	WOH	WOH	WOH											
2215															2,213.6	3.0
															RESIDUAL	
	2,213.1	3.5	WOH	WOH	1											
	2,210.6	6.0														
2210																
	2,208.1	8.5	1	4	6										2,208.6	8.0
															Medium dense to dense, brown to light gray silty SAND (A-2)	
2205																
	2,203.1	13.5	6	8	14											
2200																
	2,198.1	18.5	14	17	17											
2195																
	2,193.1	23.5	10	21	21											
															2,191.6	25.0
															Boring Terminated at Elevation 2,191.6 ft in Residual Soil	
2190																
2185																
2180																

NCDOT BORE SINGLE BORING LOGS - TRANSYLVANIA 870162.GPJ NC_DOT.GDT 7/28/14